

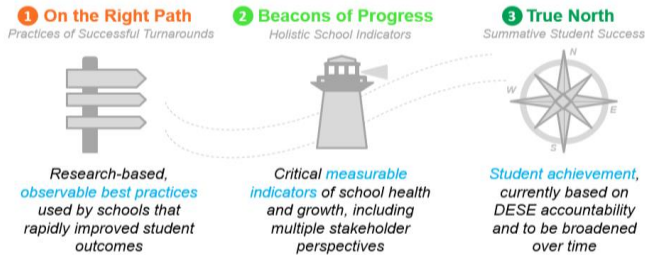
Demographics

Principal: Dan Sullivan

Enrollment: 304

Student demographics:

87% Latino; 10% African American;
2% White
28% Students with disabilities
25% English language learners
89% Economically disadvantaged



Summary of Results by Roadmap Category	Weight	2019	2018
On the Right Path: Observable Practices of High-Performing Schools	20%	78%	58%
Beacons of Progress: Measurable Indicators of School Health & Growth	30%	55%	32%
True North: Summative Student Achievement (DESE)	50%	23%	11%
Total Roadmap Score	100%	44%	27%

1. On the Right Path	2019 value	2018 value	Goal	Goal Progress	Rating vs. SEZP Schools	Improvement vs. Prior Year
I: Instructional Leadership, Shared Responsibility, & Collaboration (max 3)	2.1	1.4	2.5	Approaching	Top	Positive
II: Intentional Practices for Improving Instruction (max 3)	1.9	1.1	2.5		Top	Positive
III: Student-Specific Supports and Instruction to All Students (max 3)	2.0	1.7	2.5	Approaching	Top	Positive
IV: Climate and Culture for Students, Families, and the Community (max 3)	1.8	1.6	2.5		Middle	Positive

2. Beacons of Progress	2019 value	2018 value	Goal	Goal Progress	Rating vs. SEZP Overall	Improvement vs. Prior Year
NWEA MAP Assessment - % students meeting growth targets in ELA	66	52	70	Approaching	Top	Positive
NWEA MAP Assessment - % students meeting growth targets in math	52	46	70		Middle	Positive
Student chronic absenteeism - % students absent 10%+ days of the year	16.2	19.8	12		Top	Positive
Out-of-school suspension rate per 500 students per day	0.81	1.43	0.5		Middle	Positive
Family Net Promoter Score: "How likely are you to recommend this school?"	28.9	-11	70		Middle	Positive
Teacher Attendance Rate	95.8	96.5	98		Low	Negative
Educator Retention - % of educators retained from June - September 2018	N/A	N/A	80		N/A	N/A
TNTP Insight Survey - Index Score (max 10)	9.2	9.6	9	Met	Top	Negative
Rutgers School Collaboration Survey (max 18)	18	14	16	Met	Top	Positive

3. True North	2019 value	2018 value	Goal	Goal Progress	Rating vs. SEZP Overall	Improvement vs. Prior Year
DESE - Accountability Percentile	1	1	20		Low	Neutral
DESE - % Meeting Improvement Targets	51	20	75		Middle	Positive
MCAS Average Scaled Score - English Language Arts MS	476.2	473.6	492.5		Low	Positive
MCAS Average Scaled Score - Mathematics MS	474.4	471.8	492.5		Low	Positive
MCAS Mean CPI - Science	33.6	28.4	80		Low	Positive
MCAS Mean SGP - English Language Arts	38.3	40.7	60		Middle	Negative
MCAS Mean SGP - Mathematics	35	34.6	60		Low	Positive
ACCESS Progress made by students on ACCESS	8.5	17.2	45		Middle	Negative
Student chronic absenteeism - % students absent 10%+ days of the year	16.2	19.8	12.0		Top	Positive