

### Demographics

Principal: Declan O'Connor

Enrollment: 326

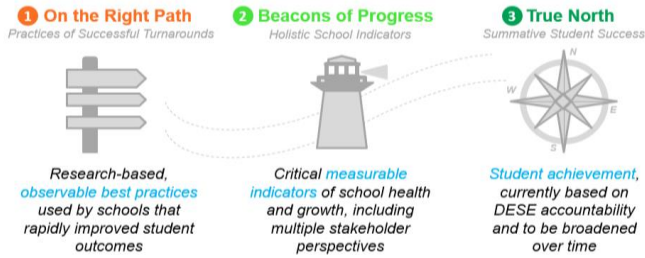
Student demographics:

84% Latino; 11% African American;  
3% White

22% Students with disabilities

7% English language learners

68% Economically disadvantaged



Summary of Results by Roadmap Category	Weight	2019	2018
<b>On the Right Path:</b> Observable Practices of High-Performing Schools	20%	89%	86%
<b>Beacons of Progress:</b> Measurable Indicators of School Health & Growth	30%	60%	59%
<b>True North:</b> Summative Student Achievement (DESE)	50%	91%	94%
<b>Total Roadmap Score</b>	100%	81%	82%

1. On the Right Path	2019 value	2018 value	Goal	Goal Progress	Rating vs. SEZP Schools	Improvement vs. Prior Year
I: Instructional Leadership, Shared Responsibility, & Collaboration (max 3)	2.3	2.4	2.5	Approaching	Top	Negative
II: Intentional Practices for Improving Instruction (max 3)	2.3	2.1	2.5	Approaching	Top	Positive
III: Student-Specific Supports and Instruction to All Students (max 3)	2.3	2.2	2.5	Approaching	Top	Positive
IV: Climate and Culture for Students, Families, and the Community (max 3)	2.0	1.9	2.5	Approaching	Middle	Positive

2. Beacons of Progress	2019 value	2018 value	Goal	Goal Progress	Rating vs. SEZP Overall	Improvement vs. Prior Year
NWEA MAP Assessment - % students meeting growth targets in ELA	52	57	70		Middle	Negative
NWEA MAP Assessment - % students meeting growth targets in math	72	58	70	Met	Top	Positive
Student chronic absenteeism - % students absent 10%+ days of the year	12.4	12.9	12	Approaching	Top	Positive
Out-of-school suspension rate per 500 students per day	0.2	0.23	0.5	Met	Top	Positive
Family Net Promoter Score: "How likely are you to recommend this school?"	40.7	46	70		Top	Negative
Teacher Attendance Rate	97.9	97.9	98	Approaching	Top	Neutral
Educator Retention - % of educators retained from June - September 2018	70	50	80	Approaching	N/A	Positive
TNTP Insight Survey - Index Score (max 10)	8	8.8	9	Approaching	Middle	Negative
Rutgers School Collaboration Survey (max 18)	10	12	16		Middle	Negative

3. True North	2019 value	2018 value	Goal	Goal Progress	Rating vs. SEZP Overall	Improvement vs. Prior Year
DESE - Accountability Percentile	65	55	20	Met	Top	Positive
DESE - % Meeting Improvement Targets	78	84	75	Met	Top	Negative
MCAS Average Scaled Score - English Language Arts MS	508.7	505.4	492.5	Met	Top	Positive
MCAS Average Scaled Score - Mathematics MS	504.4	501.6	492.5	Met	Top	Positive
MCAS Mean CPI - Science	81.0	78.6	80	Met	Top	Positive
MCAS Mean SGP - English Language Arts	52.7	55.8	60	Approaching	Top	Negative
MCAS Mean SGP - Mathematics	57.5	47.2	60	Approaching	Top	Positive
ACCESS Progress made by students on ACCESS	N/A	N/A	45		N/A	N/A
Student chronic absenteeism - % students absent 10%+ days of the year	12.4	12.9	12.0	Approaching	Top	Positive