

Demographics

Principal: Diane Bauer

Enrollment: 592

Student demographics:

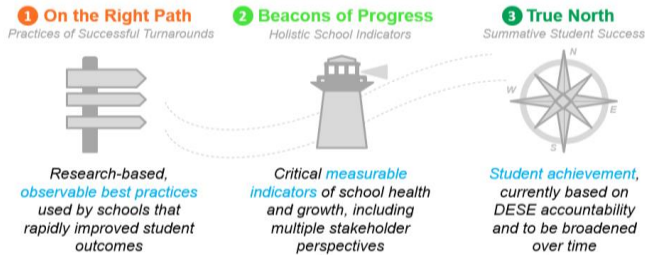
71% Latino; 19% African American;

9% White

27% Students with disabilities

17% English language learners

76% Low Income



Summary of Results by Roadmap Category	Weight	2019	2018
On the Right Path: Observable Practices of High-Performing Schools	20%	32%	37%
Beacons of Progress: Measurable Indicators of School Health & Growth	30%	25%	20%
True North: Summative Student Achievement (DESE)	50%	31%	22%
Total Roadmap Score	100%	29%	24%

1. On the Right Path	2019 value	2018 value	Goal	Goal Progress	Rating vs. SEZP Schools	Improvement vs. Prior Year
I: Instructional Leadership, Shared Responsibility, & Collaboration (max 3)	1.0	1.0	2.5		Low	Neutral
II: Intentional Practices for Improving Instruction (max 3)	0.8	1.1	2.5		Low	Negative
III: Student-Specific Supports and Instruction to All Students (max 3)	0.7	0.5	2.5		Low	Positive
IV: Climate and Culture for Students, Families, and the Community (max 3)	0.7	1.1	2.5		Low	Negative

2. Beacons of Progress	2019 value	2018 value	Goal	Goal Progress	Rating vs. SEZP Overall	Improvement vs. Prior Year
NWEA MAP Assessment - % students meeting growth targets in ELA	38	50	70		Low	Negative
NWEA MAP Assessment - % students meeting growth targets in math	60	50	70	Approaching	Middle	Positive
Student chronic absenteeism - % students absent 10%+ days of the year	36.0	31.0	12		Low	Negative
Out-of-school suspension rate per 500 students per day	0.23	0.83	0.5	Met	Top	Positive
Family Net Promoter Score: "How likely are you to recommend this school?"	-24.5	N/A	70		Low	N/A
Teacher Attendance Rate	96.4	96.4	98		Middle	Neutral
Educator Retention - % of educators retained from June - September 2018	N/A	N/A	80		N/A	N/A
TNTP Insight Survey - Index Score (max 10)	5	4.5	9		Low	Positive
Rutgers School Collaboration Survey (max 18)	6	3	16		Low	Positive

3. True North	2019 value	2018 value	Goal	Goal Progress	Rating vs. SEZP Overall	Improvement vs. Prior Year
DESE - Accountability Percentile	3	2	20		Middle	Positive
DESE - % Meeting Improvement Targets	55	40	75		Middle	Positive
MCAS Mean CPI - English Language Arts	86.5	79.4	90	Approaching	N/A	Positive
MCAS Mean CPI - Mathematics	73.5	65.3	90	Approaching	N/A	Positive
MCAS Mean CPI - Science	72.9	59.6	80	Approaching	Middle	Positive
MCAS Mean SGP - English Language Arts	42.3	38.1	60		Middle	Positive
MCAS Mean SGP - Mathematics	42.5	48.6	60		Middle	Negative