

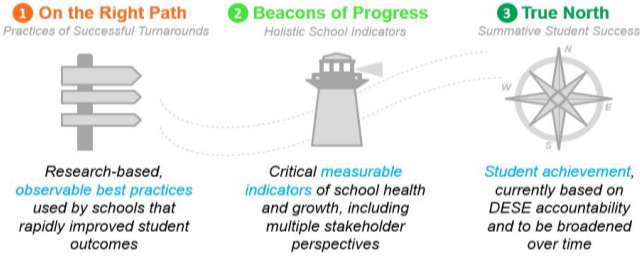
### Demographics

Principal: Michael Calvanese

Enrollment: 759

#### Student demographics:

55% Latino; 27% African American;  
 14% White  
 21% Students with disabilities  
 10% English language learners  
 67% Economically disadvantaged



| Summary of Results by Roadmap Category                                      | Weight | 2019 | 2018 |
|---|--------|------|------|
| <b>On the Right Path:</b> Observable Practices of High-Performing Schools   | 20%    | 80%  | 64%  |
| <b>Beacons of Progress:</b> Measurable Indicators of School Health & Growth | 30%    | 44%  | 46%  |
| <b>True North:</b> Summative Student Achievement (DESE)                     | 50%    | 71%  | 55%  |
| <b>Total Roadmap Score</b>  | 100%   | 65%  | 54%  |

|   | 2019 value | 2018 value | Goal  | Goal Progress | Rating vs. SEZP Schools | Improvement vs. Prior Year |
|---|------------|------------|-------|---------------|-------------------------|----------------------------|
| <b>1. On the Right Path</b>   |            |            |       |               |                         |                            |
| I: Instructional Leadership, Shared Responsibility, & Collaboration (max 3) | 1.7        | 1.3        | 2.5   |               | Middle                  | Positive                   |
| II: Intentional Practices for Improving Instruction (max 3)                 | 1.8        | 1.2        | 2.5   |               | Top                     | Positive                   |
| III: Student-Specific Supports and Instruction to All Students (max 3)      | 2.3        | 2.3        | 2.5   | Approaching   | Top                     | Negative                   |
| IV: Climate and Culture for Students, Families, and the Community (max 3)   | 2.2        | 1.6        | 2.5   | Approaching   | Top                     | Positive                   |
| <b>2. Beacons of Progress</b>   |            |            |       |               |                         |                            |
| NWEA MAP Assessment - % students meeting growth targets in ELA              | 55         | 52         | 70    |               | Top                     | Positive                   |
| NWEA MAP Assessment - % students meeting growth targets in math             | 52         | 54         | 70    |               | Middle                  | Negative                   |
| Student chronic absenteeism - % students absent 10%+ days of the year       | 22.1       | 19.7       | 12    |               | Middle                  | Negative                   |
| Out-of-school suspension rate per 500 students per day                      | 0.61       | 1.03       | 0.5   |               | Middle                  | Positive                   |
| Family Net Promoter Score: "How likely are you to recommend this school?"   | 16.3       | 40         | 70    |               | Middle                  | Negative                   |
| Teacher Attendance Rate   | 96.4       | 96.1       | 98    |               | Middle                  | Positive                   |
| Educator Retention - % of educators retained from June - September 2018     | 75         | 75         | 80    | Approaching   | N/A                     | Neutral                    |
| TNTP Insight Survey - Index Score (max 10)                                  | 8.9        | 8.6        | 9     | Approaching   | Top                     | Positive                   |
| Rutgers School Collaboration Survey (max 18)                                | 16         | 17         | 16    | Met           | Top                     | Negative                   |
| <b>3. True North</b>  |            |            |       |               |                         |                            |
| DESE - Accountability Percentile  | 15         | 12         | 20    |               | Top                     | Positive                   |
| DESE - % Meeting Improvement Targets  | 66         | 48         | 75    | Approaching   | Top                     | Positive                   |
| MS- MCAS Average Scaled Score - English Language Arts                       | 489.2      | 487.2      | 492.5 | Approaching   | Top                     | Positive                   |
| MS - MCAS Average Scaled Score - Mathematics                                | 490.4      | 487.4      | 492.5 | Approaching   | Top                     | Positive                   |
| HS MCAS Mean CPI - English Language Arts                                    | 93.3       | 86.4       | 90    | Met           | N/A                     | Positive                   |
| HS MCAS Mean CPI - Mathematics  | 82.3       | 67.9       | 90    | Approaching   | N/A                     | Positive                   |
| MS MCAS Mean CPI - Science  | 47.0       | 39.1       | 80    |               | Middle                  | Positive                   |
| HS MCAS Mean CPI - Science  | 75.9       | 39.1       | 80    | Approaching   | Top                     | Positive                   |
| MS MCAS Mean SGP - English Language Arts                                    | 48.5       | 52.3       | 60    | Approaching   | Top                     | Negative                   |
| HS MCAS Mean SGP - English Language Arts                                    | 37.0       | 52.3       | 60    |               | Middle                  | Negative                   |
| MS MCAS Mean SGP - Mathematics  | 52.5       | 52.2       | 60    | Approaching   | Top                     | Positive                   |
| HS MCAS Mean SGP - Mathematics  | 43.4       | 52.2       | 60    |               | Middle                  | Negative                   |
| MS ACCESS Progress made by students on ACCESS                               | 14.6       | 22.2       | 45    |               | Middle                  | Negative                   |