

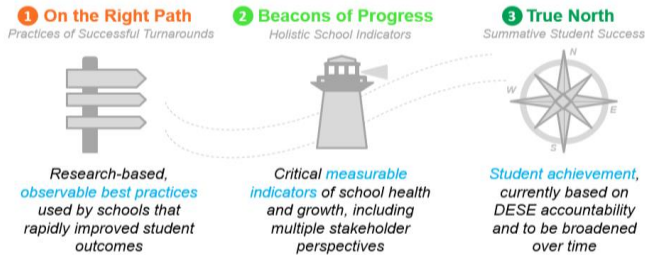
Demographics

Principal: Saran Macon and Jay Saunders

Enrollment: 725

Student demographics:

- 67% Latino; 18% African American; 6% White
- 23% Students with disabilities
- 29% English language learners
- 82% Economically disadvantaged



Summary of Results by Roadmap Category	Weight	2019	2018
On the Right Path: Observable Practices of High-Performing Schools	20%	67%	61%
Beacons of Progress: Measurable Indicators of School Health & Growth	30%	38%	41%
True North: Summative Student Achievement (DESE)	50%	16%	26%
Total Roadmap Score	100%	33%	38%

1. On the Right Path	2019 value	2018 value	Goal	Goal Progress	Rating vs. SEZP Schools	Improvement vs. Prior Year
I: Instructional Leadership, Shared Responsibility, & Collaboration (max 3)	1.7	1.4	2.5		Middle	Positive
II: Intentional Practices for Improving Instruction (max 3)	1.5	1.3	2.5		Middle	Positive
III: Student-Specific Supports and Instruction to All Students (max 3)	1.5	1.5	2.5		Middle	Neutral
IV: Climate and Culture for Students, Families, and the Community (max 3)	2.0	1.9	2.5	Approaching	Middle	Positive

2. Beacons of Progress	2019 value	2018 value	Goal	Goal Progress	Rating vs. SEZP Overall	Improvement vs. Prior Year
NWEA MAP Assessment - % students meeting growth targets in ELA	53	59	70		Middle	Negative
NWEA MAP Assessment - % students meeting growth targets in math	60	63	70	Approaching	Middle	Negative
Student chronic absenteeism - % students absent 10%+ days of the year	28.1	31.9	12		Middle	Positive
Out-of-school suspension rate per 500 students per day	0.84	1.24	0.5		Low	Positive
Family Net Promoter Score: "How likely are you to recommend this school?"	-8.1	-3	70		Middle	Negative
Teacher Attendance Rate	95.8	96.7	98		Low	Negative
Educator Retention - % of educators retained from June - September 2018	81	80	80	Met	N/A	Positive
TNTP Insight Survey - Index Score (max 10)	7.2	7.3	9	Approaching	Low	Negative
Rutgers School Collaboration Survey (max 18)	9	10	16		Low	Negative

3. True North	2019 value	2018 value	Goal	Goal Progress	Rating vs. SEZP Overall	Improvement vs. Prior Year
DESE - Accountability Percentile	2	3	20		Middle	Negative
DESE - % Meeting Improvement Targets	25	42	75		Low	Negative
MCAS Average Scaled Score - English Language Arts MS	481.5	482.4	492.5		Middle	Negative
MCAS Average Scaled Score - Mathematics MS	487.1	485.9	492.5	Approaching	Top	Positive
MCAS Mean CPI - Science	44.7	45.3	80		Middle	Negative
MCAS Mean SGP - English Language Arts	34.7	41.4	60		Low	Negative
MCAS Mean SGP - Mathematics	44.4	45.8	60		Middle	Negative
ACCESS Progress made by students on ACCESS	15.4	22.0	45		Middle	Negative
Student chronic absenteeism - % students absent 10%+ days of the year	28.1	31.9	12.0		Middle	Positive