

### Demographics

Principal: Andrew Marshall

Enrollment: 376

Student demographics:

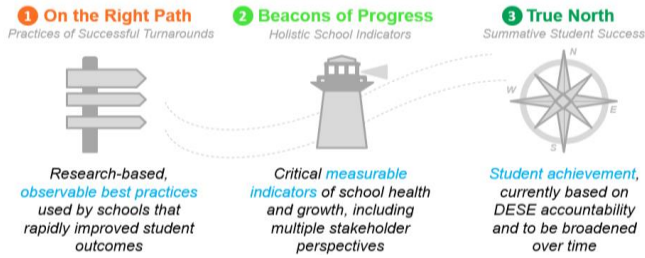
82% Latino; 14% African American;

4% White

23% Students with disabilities

27% English language learners

95% Economically disadvantaged



Summary of Results by Roadmap Category	Weight	2019	2018
<b>On the Right Path:</b> Observable Practices of High-Performing Schools	20%	56%	50%
<b>Beacons of Progress:</b> Measurable Indicators of School Health & Growth	30%	13%	32%
<b>True North:</b> Summative Student Achievement (DESE)	50%	19%	17%
<b>Total Roadmap Score</b>	100%	25%	28%

1. On the Right Path	2019 value	2018 value	Goal	Goal Progress	Rating vs. SEZP Schools	Improvement vs. Prior Year
I: Instructional Leadership, Shared Responsibility, & Collaboration (max 3)	1.6	1.1	2.5		Middle	Positive
II: Intentional Practices for Improving Instruction (max 3)	1.5	1.3	2.5		Middle	Positive
III: Student-Specific Supports and Instruction to All Students (max 3)	0.7	1.2	2.5		Low	Negative
IV: Climate and Culture for Students, Families, and the Community (max 3)	1.8	1.4	2.5		Middle	Positive

2. Beacons of Progress	2019 value	2018 value	Goal	Goal Progress	Rating vs. SEZP Overall	Improvement vs. Prior Year
NWEA MAP Assessment - % students meeting growth targets in ELA	38	63	70		Low	Negative
NWEA MAP Assessment - % students meeting growth targets in math	39	51	70		Low	Negative
Student chronic absenteeism - % students absent 10%+ days of the year	31.1	33.3	12		Low	Positive
Out-of-school suspension rate per 500 students per day	0.88	0.92	0.5		Low	Positive
Family Net Promoter Score: "How likely are you to recommend this school?"	-17.1	22	70		Low	Negative
Teacher Attendance Rate	95.5	96.5	98		Low	Negative
Educator Retention - % of educators retained from June - September 2018	N/A	N/A	80		N/A	N/A
TNTP Insight Survey - Index Score (max 10)	6.1	6	9		Low	Positive
Rutgers School Collaboration Survey (max 18)	8	0	16		Low	Positive

3. True North	2019 value	2018 value	Goal	Goal Progress	Rating vs. SEZP Overall	Improvement vs. Prior Year
DESE - Accountability Percentile	1	2	20		Low	Negative
DESE - % Meeting Improvement Targets	40	28	75		Middle	Positive
MCAS Average Scaled Score - English Language Arts MS	475.8	478.8	492.5		Low	Negative
MCAS Average Scaled Score - Mathematics MS	475.8	479.8	492.5		Low	Negative
MCAS Mean CPI - Science	N/A	N/A	80	N/A	N/A	N/A
MCAS Mean SGP - English Language Arts	35.4	40.7	60		Middle	Negative
MCAS Mean SGP - Mathematics	31.5	43.4	60		Low	Negative
ACCESS Progress made by students on ACCESS	17.7	4.3	45		Top	Positive
Student chronic absenteeism - % students absent 10%+ days of the year	31.1	33.3	12.0		Middle	Positive