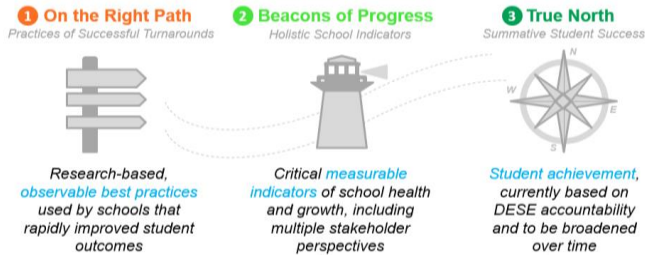


Demographics

Enrollment: 491
Student demographics:
 67% Latino; 21% African American;
 10% White
 26% Students with disabilities
 14% English language learners
 83% Economically disadvantaged



Summary of Results by Roadmap Category	Weight	2019	2018
On the Right Path: Observable Practices of High-Performing Schools	20%	N/A	N/A
Beacons of Progress: Measurable Indicators of School Health & Growth	30%	N/A	N/A
True North: Summative Student Achievement (DESE)	50%	16%	16%
Total Roadmap Score	100%	N/A	N/A

As a contract school, UP did not participate in the full Roadmap; True North score is provided below

3. True North	2019 value	2018 value	Goal	Goal Progress	Rating vs. SEZP Improvement vs.	
					Overall	Prior Year
DESE - Accountability Percentile	1	1	20		Low	Neutral
DESE - % Meeting Improvement Targets	32	33	75		Low	Negative
MCAS Average Scaled Score - English Language Arts MS	471.4	474.8	492.5		Low	Negative
MCAS Average Scaled Score - Mathematics MS	472.8	474.6	492.5		Low	Negative
MCAS Mean CPI - Science	36.9	41.1	80		Low	Negative
MCAS Mean SGP - English Language Arts	30.2	36.6	60		Low	Negative
MCAS Mean SGP - Mathematics	31	32.8	60		Low	Negative
ACCESS Progress made by students on ACCESS	4.8	14.0	45		Low	Negative
Student chronic absenteeism - % students absent 10%+ days of the year	41.2	30.5	12.0		Low	Negative