

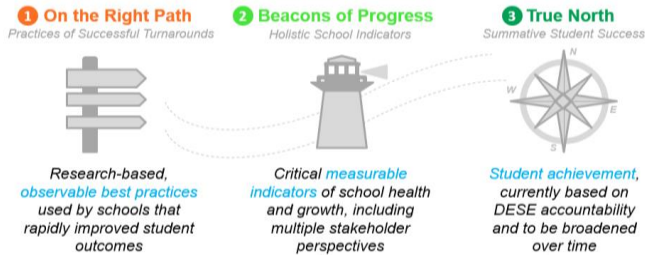
Demographics

Principal: Dan Sullivan

Enrollment: 683

Student demographics:

65% Latino; 22% African American;
10% White
24% Students with disabilities
17% English language learners
82% Economically disadvantaged



Summary of Results by Roadmap Category	Weight	2019	2018
On the Right Path: Observable Practices of High-Performing Schools	20%	45%	35%
Beacons of Progress: Measurable Indicators of School Health & Growth	30%	28%	22%
True North: Summative Student Achievement (DESE)	50%	15%	19%
Total Roadmap Score	100%	25%	23%

1. On the Right Path	2019 value	2018 value	Goal	Goal Progress	Rating vs. SEZP Schools	Improvement vs. Prior Year
I: Instructional Leadership, Shared Responsibility, & Collaboration (max 3)	1.4	0.9	2.5		Low	Positive
II: Intentional Practices for Improving Instruction (max 3)	0.9	0.9	2.5		Low	Negative
III: Student-Specific Supports and Instruction to All Students (max 3)	1.2	0.3	2.5		Low	Positive
IV: Climate and Culture for Students, Families, and the Community (max 3)	1.0	1.4	2.5		Low	Negative

2. Beacons of Progress	2019 value	2018 value	Goal	Goal Progress	Rating vs. SEZP Overall	Improvement vs. Prior Year
NWEA MAP Assessment - % students meeting growth targets in ELA	46	50	70		Low	Negative
NWEA MAP Assessment - % students meeting growth targets in math	47	50	70		Low	Negative
Student chronic absenteeism - % students absent 10%+ days of the year	25.9	24.6	12		Middle	Negative
Out-of-school suspension rate per 500 students per day	0.83	1.28	0.5		Low	Positive
Family Net Promoter Score: "How likely are you to recommend this school?"	-22.7	-37	70		Low	Positive
Teacher Attendance Rate	97.5	95.7	98	Approaching	Top	Positive
Educator Retention - % of educators retained from June - September 2018	76	63	80	Approaching	N/A	Positive
TNTP Insight Survey - Index Score (max 10)	7.7	7.2	9	Approaching	Middle	Positive
Rutgers School Collaboration Survey (max 18)	12	9	16		Middle	Positive

3. True North	2019 value	2018 value	Goal	Goal Progress	Rating vs. SEZP Overall	Improvement vs. Prior Year
DESE - Accountability Percentile	1	2	20		Low	Negative
DESE - % Meeting Improvement Targets	30	32	75		Low	Negative
MCAS Average Scaled Score - English Language Arts MS	479.4	483.9	492.5		Middle	Negative
MCAS Average Scaled Score - Mathematics MS	480.1	479.5	492.5		Middle	Positive
MCAS Mean CPI - Science	38.9	36.8	80		Low	Positive
MCAS Mean SGP - English Language Arts	33.5	45.8	60		Low	Negative
MCAS Mean SGP - Mathematics	36.7	36.1	60		Middle	Positive
ACCESS Progress made by students on ACCESS	16.3	8.3	45		Middle	Positive
Student chronic absenteeism - % students absent 10%+ days of the year	25.9	24.6	12.0		Middle	Negative