

Demographics

Principal: Anna Breen

Enrollment: 321

Student demographics:

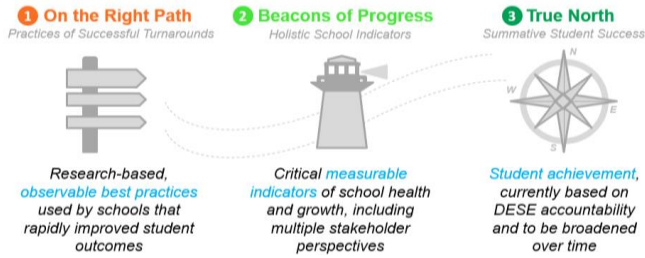
75% Latino; 14% African American;

9% White

24% Students with disabilities

22% English language learners

83% Economically disadvantaged



Summary of Results by Roadmap Category	Weight	2019	2018
On the Right Path: Observable Practices of High-Performing Schools	20%	68%	65%
Beacons of Progress: Measurable Indicators of School Health & Growth	30%	49%	39%
True North: Summative Student Achievement (DESE)	50%	44%	61%
Total Roadmap Score	100%	50%	55%

1. On the Right Path	2019 value	2018 value	Goal	Goal Progress	Rating vs. SEZP Schools	Improvement vs. Prior Year
I: Instructional Leadership, Shared Responsibility, & Collaboration (max 3)	1.9	1.7	2.5		Top	Positive
II: Intentional Practices for Improving Instruction (max 3)	1.5	1.6	2.5		Middle	Negative
III: Student-Specific Supports and Instruction to All Students (max 3)	1.7	1.8	2.5		Middle	Negative
IV: Climate and Culture for Students, Families, and the Community (max 3)	1.7	1.4	2.5		Low	Positive

2. Beacons of Progress	2019 value	2018 value	Goal	Goal Progress	Rating vs. SEZP Overall	Improvement vs. Prior Year
NWEA MAP Assessment - % students meeting growth targets in ELA	51	47	70		Middle	Positive
NWEA MAP Assessment - % students meeting growth targets in math	63	69	70	Approaching	Top	Negative
Student chronic absenteeism - % students absent 10%+ days of the year	29.0	22.4	12		Low	Negative
Out-of-school suspension rate per 500 students per day	0.78	2.66	0.5		Middle	Positive
Family Net Promoter Score: "How likely are you to recommend this school?"	15.7	0	70		Middle	Positive
Teacher Attendance Rate	96.8	98.4	98		Middle	Negative
Educator Retention - % of educators retained from June - September 2018	93	N/A	80	Met	N/A	N/A
TNTP Insight Survey - Index Score (max 10)	8.1	7.3	9	Approaching	Middle	Positive
Rutgers School Collaboration Survey (max 18)	14	9	16	Approaching	Top	Positive

3. True North	2019 value	2018 value	Goal	Goal Progress	Rating vs. SEZP Overall	Improvement vs. Prior Year
DESE - Accountability Percentile	5	8	20		Top	Negative
DESE - % Meeting Improvement Targets	72	92	75	Approaching	Top	Negative
MCAS Average Scaled Score - English Language Arts MS	479.8	484.3	492.5		Middle	Negative
MCAS Average Scaled Score - Mathematics MS	482.5	480.3	492.5	Approaching	Middle	Positive
MCAS Mean CPI - Science	N/A	N/A	80	N/A	N/A	N/A
MCAS Mean SGP - English Language Arts	41.8	55.0	60		Middle	Negative
MCAS Mean SGP - Mathematics	49.8	43.9	60	Approaching	Top	Positive
ACCESS Progress made by students on ACCESS	49.2	32.4	45	Met	Top	Positive
Student chronic absenteeism - % students absent 10%+ days of the year	29.0	22.4	12.0		Middle	Negative