

### Demographics

Principal: Grace Howard-Donlin

Enrollment: 132

Student demographics:

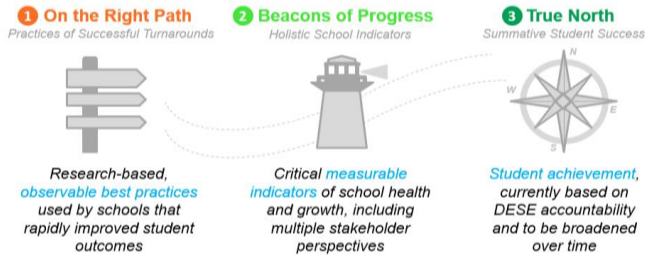
57% Latino; 21% African American;

11% White

2% Students with disabilities

2% English language learners

73% Low Income



Summary of Results by Roadmap Category	Weight	2019	2018
<b>On the Right Path:</b> Observable Practices of High-Performing Schools	40%	61%	50%
<b>Beacons of Progress:</b> Measurable Indicators of School Health & Growth	60%	71%	71%
<b>True North:</b> Summative Student Achievement (DESE)	0%	N/A	N/A
<b>Total Roadmap Score</b>	100%	67%	62%

SHA does not have a True North section as DESE categorizes the school with High School of Commerce

	2019 value	2018 value	Goal	Goal Progress	Rating vs. SEZP Schools	Improvement vs. Prior Year
<b>1. On the Right Path</b>						
I: Instructional Leadership, Shared Responsibility, & Collaboration (max 3)	1.3	1.1	2.5		Low	Positive
II: Intentional Practices for Improving Instruction (max 3)	1.3	1.1	2.5		Low	Positive
III: Student-Specific Supports and Instruction to All Students (max 3)	1.3	0.8	2.5		Middle	Positive
IV: Climate and Culture for Students, Families, and the Community (max 3)	2.2	1.9	2.5	Approaching	Top	Positive
<b>2. Beacons of Progress</b>						
NWEA MAP Assessment - % students meeting growth targets in ELA	50	74	70		Middle	Negative
NWEA MAP Assessment - % students meeting growth targets in math	74	50	70	Met	Top	Positive
Student chronic absenteeism - % students absent 10%+ days of the year	12.5	5.8	12	Approaching	Top	Negative
Out-of-school suspension rate per 500 students per day	0.02	0.05	0.5	Met	Top	Positive
Family Net Promoter Score: "How likely are you to recommend this school?"	39.4	12	70		Top	Positive
Teacher Attendance Rate	99.4	99.9	98	Met	Top	Negative
Educator Retention - % of educators retained from June - September 2018	N/A	N/A	80		N/A	N/A
TNTP Insight Survey - Index Score (max 10)	9.3	9.4	9	Met	Top	Negative
Rutgers School Collaboration Survey (max 18)	11	16	16		Middle	Negative