

Demographics

Principal: Robert Francesca

Enrollment: 260

Student demographics:

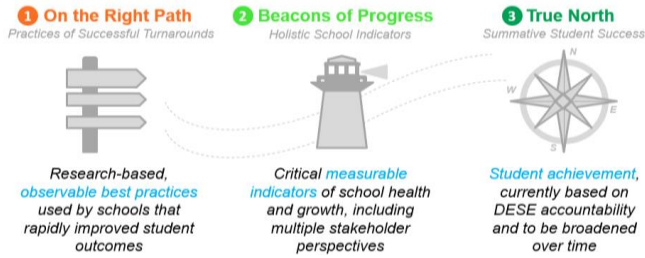
79% Latino; 11% African American;

8% White

34% Students with disabilities

17% English language learners

77% Economically disadvantaged



Summary of Results by Roadmap Category	Weight	2019	2018
On the Right Path: Observable Practices of High-Performing Schools	20%	64%	59%
Beacons of Progress: Measurable Indicators of School Health & Growth	30%	49%	32%
True North: Summative Student Achievement (DESE)	50%	26%	18%
Total Roadmap Score	100%	40%	30%

1. On the Right Path	2019 value	2018 value	Goal	Goal Progress	Rating vs. SEZP Schools	Improvement vs. Prior Year
I: Instructional Leadership, Shared Responsibility, & Collaboration (max 3)	1.4	1.3	2.5		Low	Positive
II: Intentional Practices for Improving Instruction (max 3)	1.6	1.6	2.5		Middle	Positive
III: Student-Specific Supports and Instruction to All Students (max 3)	1.5	1.3	2.5		Middle	Positive
IV: Climate and Culture for Students, Families, and the Community (max 3)	1.9	1.7	2.5		Middle	Positive

2. Beacons of Progress	2019 value	2018 value	Goal	Goal Progress	Rating vs. SEZP Overall	Improvement vs. Prior Year
NWEA MAP Assessment - % students meeting growth targets in ELA	60	39	70	Approaching	Top	Positive
NWEA MAP Assessment - % students meeting growth targets in math	50	45	70		Low	Positive
Student chronic absenteeism - % students absent 10%+ days of the year	26.6	27.8	12		Middle	Positive
Out-of-school suspension rate per 500 students per day	0.41	0.78	0.5	Met	Middle	Positive
Family Net Promoter Score: "How likely are you to recommend this school?"	40	31	70		Top	Positive
Teacher Attendance Rate	96.4	95.7	98		Middle	Positive
Educator Retention - % of educators retained from June - September 2018	N/A	N/A	80		N/A	N/A
TNTP Insight Survey - Index Score (max 10)	8.5	8.6	9	Approaching	Middle	Negative
Rutgers School Collaboration Survey (max 18)	9	10	16		Low	Negative

3. True North	2019 value	2018 value	Goal	Goal Progress	Rating vs. SEZP Overall	Improvement vs. Prior Year
DESE - Accountability Percentile	2	2	20		Middle	Neutral
DESE - % Meeting Improvement Targets	51	29	75		Middle	Positive
MCAS Average Scaled Score - English Language Arts MS	482.4	478.5	492.5		Top	Positive
MCAS Average Scaled Score - Mathematics MS	478.4	476.9	492.5		Middle	Positive
MCAS Mean CPI - Science	45.8	42.5	80		Middle	Positive
MCAS Mean SGP - English Language Arts	44.5	44.6	60		Top	Negative
MCAS Mean SGP - Mathematics	37.5	45.1	60		Middle	Negative
ACCESS Progress made by students on ACCESS	2.3	12.8	45		Low	Negative
Student chronic absenteeism - % students absent 10%+ days of the year	26.6	27.8	12.0		Middle	Positive